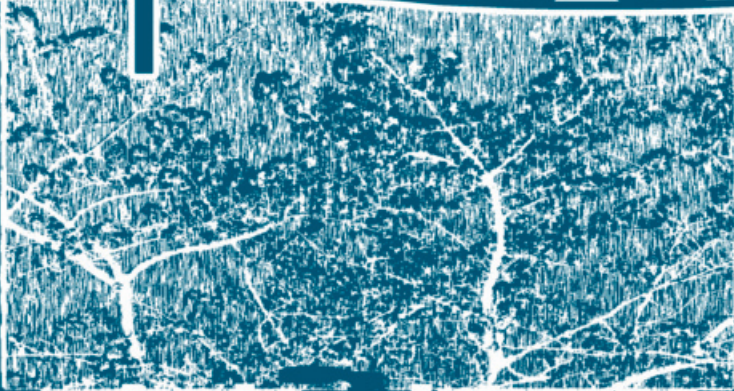


exposed



window into reality



an art and literature contest for teens, grades 7-12

yorba linda public library | teens

- THE BASICS -

“Exposed: Window Into Reality” is an art and literature contest designed especially for teens in grades 7-12.

Entries must express this year’s theme, *Window Into Reality*. Entries must have been created between July 2014 and November 6, 2014 and are due to the Yorba Linda Public Library before 9:00 p.m. on Thursday, November 6, 2014.

- GENERAL GUIDELINES -

- Participants must be in grades 7 through 12.
- A person and/or group may submit a maximum of 1 (one) entry in any art category (this includes photography) and 1 (one) entry in any literature category (either Short Story or Poetry).
- Entries must have been created between July 2014 and November 6, 2014.
- Entries may not have been submitted in any previous contest.
- An official entry form must be submitted with your entry.
- Please include a typed, double-spaced explanation (no longer than 150 words) about how the piece fits into your interpretation of this year’s theme *Window Into Reality*. This is to help the judges understand your thoughts and purpose in creating the particular art piece. They will consider this in the evaluation and judging process.
- Judging will be conducted by the Yorba Linda Arts Alliance, and judges’ decisions will be final.
- The library reserves the right to reject any entry it deems inappropriate or which contains excessive profanity and explicit sexual or violent content.

Contest entry forms are available at the Library Information Desk.

Top placing artwork will be displayed at the Richard Nixon Presidential Library and Museum from November 22 through December 2, 2014.

Join us for the exhibit gala and awards presentation at 6:30 p.m. on Tuesday, December 2, 2014.

Artwork that does not place in the competition must be picked up from the Yorba Linda Public Library by Saturday, November 29, 2014.

- LITERATURE GUIDELINES -

SHORT STORY

- Entry must be an unpublished, original fiction story not to exceed 3,000 words in length.
- Submit one (1) copy of your short story and entry form in a large envelope.
- Entry must be typed, single-sided, double-spaced on plain 8.5” x 11” paper. Illustrations will not be considered. Handwritten entries will not be judged.
- Please include a typed, double-spaced explanation (no longer than 150 words) about how the piece fits into your interpretation of this year’s theme *Window Into Reality*. This is to help the judges understand your thoughts and purpose in creating the particular literature piece. They will consider this information during the evaluation process.
- Entries will not be returned. Please keep a copy of your short story.
- Your name should not be included on your entry.

POETRY

- Entry must be an unpublished, original poem.
- Submit one (1) copy of your poetry and entry form in a large envelope.
- Entry must be typed, single-sided, double-spaced on plain 8.5” x 11” paper. Illustrations will not be considered. Handwritten entries will not be judged.
- Please include a typed, double-spaced explanation (no longer than 150 words) about how the piece fits into your interpretation of this year’s theme *Window Into Reality*. This is to help the judges understand your thoughts and purpose in creating the particular literature piece. They will consider this information during the evaluation process.
- Entries will not be returned. Please keep a copy of your poem.
- Your name should not be included on your entry.

- PRIZES -

As part of the contest, prizes will be awarded as listed:

Best in Show \$50.00 gift card

The following prizes will be awarded in each category.

| | |
|---------------------|-------------------|
| First Place | \$35.00 gift card |
| Second Place | \$25.00 gift card |
| Third Place | \$20.00 gift card |

- ART GUIDELINES -

DRAWING, PAINTING & PHOTOGRAPHY

- Entry must be an original, unpublished work.
- Artwork may be no larger than 30 in. high, 30 in. wide and 4 in. deep, including the outside dimensions of the frame.
- Each entry should include an index card with the participant’s name(s), title of piece, medium, address, phone number, school, grade and teacher’s name (if applicable). Using clear tape, attach it to the back of the artwork in the lower right corner.
- Please include a typed, double-spaced explanation (no longer than 150 words) about how the piece fits into your interpretation of this year’s theme *Window Into Reality*. This is to help the judges understand your thoughts and purpose in creating the particular art piece. They will consider this information during the evaluation process.
- All artwork must be framed. Also, all frames must include a way to hang (such as hanging wire).
- Any art that is raised, or 3D art, must be enclosed within its frame (such as a shadow box frame).
- All entries should use a Plexi-Glass frame (not glass material), for safety purposes.

GRAPHIC DESIGN

- Entry must be an original, unpublished work.
- Artwork may be no larger than 14 in. high, 20 in. wide and 4 in. deep, including the outside dimensions of the frame.
- A CD containing the file used to create the printed work with all formatting visible must be submitted with entry.
- Each entry should include an index card with the participant’s name(s), title of piece, address, and phone number, school, grade and teacher’s name (if applicable). Using clear tape, attach it to the back of the artwork in the lower right corner.
- Please include a typed, double-spaced explanation (no longer than 150 words) about how the piece fits into your interpretation of this year’s theme *Window Into Reality*. This is to help the judges understand your thoughts and purpose in creating the particular art piece. They will consider this information during the evaluation process.
- All artwork must be framed. Also, all frames must include a way to hang (such as hanging wire).
- Any art that is raised, or 3D art, must be enclosed within its frame (such as a shadow box frame).
- All entries should use a Plexi-Glass frame (not glass material), for safety purposes.
- The CD should be clearly labeled with all of the above information as well, using an index card or a disc contents sheet.

ALL ENTRIES ARE DUE TO THE YORBA LINDA PUBLIC LIBRARY BEFORE 9:00 P.M. ON THURSDAY, NOVEMBER 6, 2014.

- CONTEST PARTNERS -

**friends of the
yorba linda
public library**
books give us wings



Prizes will be awarded through the generosity of the Friends of the Yorba Linda Public Library.

This art contest is presented in cooperation with the Yorba Linda Arts Alliance and the Richard Nixon Presidential Library and Museum.



Selected art will be displayed at the Richard Nixon Presidential Library and Museum from November 22-December 2, 2014.

DISCLAIMER

General Details - By entering "*Exposed: Window Into Reality*," I understand that the judges' decisions are final. I agree to abide by all rules and regulations contained in the contest guidelines herein and understand that such rules and regulations are incorporated with and become part of this agreement. This contest is for students in grades 7-12 only.

Artwork Liability Limitations - While every reasonable precaution will be taken for safeguarding exhibits, it is understood that in no case shall the Yorba Linda Public Library, its employees, or any of its affiliates be responsible for any loss, damage or injury to any artwork while participating in the "*Exposed: Window Into Reality*" art and literature contest.

Ownership of Materials - Entries must be the artist's original work and must never have been entered in any previous contests.

Notifications - The Yorba Linda Public Library reserves the right to change and/or modify contest guidelines without public notification.

Validity - These materials are valid for the 2014 "*Exposed: Window Into Reality*". All materials must have been created between July 1, 2014 and November 6, 2014.

Exposed: Window Into Reality is not affiliated with the school or school district. The school district does not endorse or sponsor this activity.
