







Richard Nixon Presidential Library
Contested Materials Collection
Folder List

<u>Box Number</u>	<u>Folder Number</u>	<u>Document Date</u>	<u>No Date</u>	<u>Subject</u>	<u>Document Type</u>	<u>Document Description</u>
44	24	4/20/1972	<input type="checkbox"/>	Campaign	Memo	To: H.R. Haldeman From: Harry Dent RE: Minnesota Poll article from MPLS. TRIBUNE, Monday, April 17, 1972, titled "About Half Hold Favorable Views of HHH, Mondale." 2pgs
44	24	3/13/1972	<input type="checkbox"/>	Campaign	Memo	To: H.R. Haldeman From: Harry S. Dent RE: Poll from Langley High shows the President to be a landslide winner. "Nixon Victor In Landslide Poll" (Saxon Scope) and "Nixon's Popularity Increases in State" (Minneapolis Tribune) attached. 3pgs
44	24		<input checked="" type="checkbox"/>	Campaign	Memo	To: Gordon Strachan From: Mort Allin RE: "For Your Information" RE: MINNEAPOLIS TRIBUNE article titled "Muskie Rated Strongest of Democratic Candidates." (Mon, Feb 14, 1972). 2pgs
44	24	2/23/1972	<input type="checkbox"/>	Campaign	Memo	To: H.R. Haldeman From: Harry Dent RE: "For Your Information" RE: Minnesota Poll article. Article titled "Nixon's Re-election Chances Rated Good" (Mon., Feb 21, 1972), attached. 2pgs
44	24	11/22/1971	<input type="checkbox"/>	Campaign	Memo	To: H.R. Haldeman From: Harry Dent RE: "For Your Information" RE: Presidential approval rating survey from Minneapolis-St. Paul. Memo from Eugene F. Trumble and Minnesota Statewide Data attached. 16pgs

<u>Box Number</u>	<u>Folder Number</u>	<u>Document Date</u>	<u>No Date</u>	<u>Subject</u>	<u>Document Type</u>	<u>Document Description</u>
44	24	11/2/1971		Campaign	Memo	To: Bob Haldeman From: Harry Dent RE: "For Your Information" regarding Minnesota Poll information. Articles titled "Nearly Half Approve of Mondale, Humphrey," and "Majority Believe Nixon Lacks Skill in Vital Areas," attached. 3pgs
44	24	9/9/1971		Campaign	Memo	To: H.R. Haldeman From: Gordon Strachan RE: Informal state poll from Minnesota. MINNEAPOLIS TRIBUNE article titled "Many Favor Connally as Nixon Running Mate" (08/29/1971) attached. 2pgs
44	24	8/29/1971		Campaign	Newspaper	Article from Minneapolis Tribune titled "Many Favor Connally as Nixon Running Mate." 1pg
44	24	7/1/1971		Campaign	Memo	To: H.R. Haldeman From: Clark MacGregor RE: "For Your Information" regarding Minnesota Poll. Article titled "Humphrey's Popularity Slips 10 Points in State" (06/28/71) attached." 2pgs
44	24	5/26/1971		Campaign	Memo	To: H.R. Haldeman From: Gordon Strachan RE: Polls from Minnesota and California with interesting sections marked. Presidential Approval Survey attached. 9pgs
44	24	5/14/1971		Campaign	Memo	To: Bob Haldeman From: Harry Dent RE: Memo from George Thiss regarding top leadership Presidential approval survey. Thiss memo and survey responses attached. 3pgs

THE WHITE HOUSE
WASHINGTON

Date : April 20, 1972

To: H. R. HALDEMAN

FROM: HARRY DENT

Please handle _____

For your information _____

(F)
BLL
Mum

HSD

The
most
negative

Minnesota

Poll

Mpls. TRIBUNE -
Monday, April 17, 1972

About half hold favorable views of Mondale, Humphrey

Copyright 1972 Minneapolis Tribune

About half of the state's voters have favorable impressions of Sens. Walter Mondale and Hubert Humphrey, according to the Minneapolis Tribune's Minnesota Poll.

However, in a mid-March survey of 600 men and women, more state residents hold an unfavorable opinion of Humphrey (42 percent) than of Mondale (24 percent). The difference arises because more Minnesotans are neutral or undecided about Mondale.

Both men are running for office this year, Mondale for reelection and Humphrey for the presidency. Both are Democrats. Of the people interviewed, 33 percent classified themselves as Democratic-Farmer-Laborites, 26 percent as Republicans, and 34 percent as independents. The remaining 4 percent considered themselves members of other parties or declined to answer.

Their ratings:

	Mondale	Humphrey
Strong approval	15%	13%
Mild approval	39	29
Neutral or noncommittal	25	10
Mild disapproval	17	23
Strong disapproval	7	19
	100%	100%

The popularity of both Mondale and Humphrey is about at the same level now as in a Minnesota Poll survey taken in mid-February.

Each person in the survey was given an 11-point rating scale to indicate his reactions toward the two leaders and how strongly he reacted.

The results of the Minneapolis Tribune's Minnesota Poll are based on personal in-the-home interviews with 600 men and women 18 years of age or older. Respondents are selected by probability sampling procedures and interviewed by a staff of 110 trained interviewers. The Minnesota Poll was established in 1944 as a public service.

THE WHITE HOUSE
WASHINGTON

March 13, 1972

MEMORANDUM FOR:

✓ H. R. HALDEMAN
JEB MAGRUDER

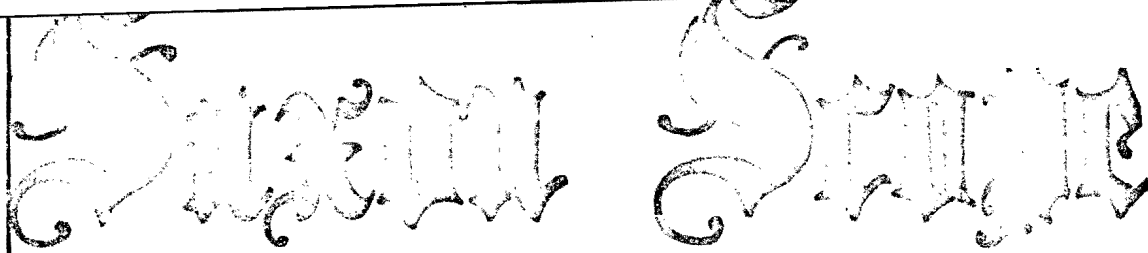
FROM:

HARRY S. DENT



Attached is a poll taken at Langley High School in McLean, Virginia. It shows the President to be a landslide winner. This is a little better than what would have been expected. Attached also is a poll from Minnesota.

File
Min
polls
if neednt
see
G 3/14



Nixon Victor In Landslide Poll

Apparently Abbie Hoffman has not made a deep impression on Langley students. A recent school-wide presidential poll revealed that most student support here remains with Richard Nixon. And out of 1,455 votes cast, no more than 66 ballots were for any one "liberal" democrat.

Senator Edmund Muskie (D-Me.) drew the second largest amount of votes with Congressman Paul McCloskey (R-Cal.)

Fires Match Up

The recent epidemic of infectious pyromania, which has left a couple bathrooms and even more administrators a little worse for the wear, was the subject of an arranged telephone conversation between representatives of the anonymous revolutionary virus, and members of the SAVON STAFF.

Two male voices, giving tongue to a "fairly organized" group of "about ten" activists, explained their insurrectionary actions. Said the first delegate, "For one thing, we're here to get an education. It's like a prison here. Cabelus and those jerks have some authority, but they're over-using it. They can't run our lives. Somebody has to show him that he's not king."

The voice went on to say that "We've each had personal experiences with administrative injustice. In general, we're just hell-raisers, but we also do it to get back. We don't have to put up with the way they treat us. Some way Cabelus is going to get in trouble with the Fire Marshall or somebody. If he's going to act bad, so can we."

The activists described their actions so far as mild. "We could do alot worse things," they said. "It's been really easy; we're not even being as sneaky as we could

coming in third. Surprisingly, Comedian Pat Paulsen, who formerly appeared on the Smothers Brothers Comedy Hour, ranked fourth in the race.

"The epitome of the whole thing is these write-ins," remarked a horrified ballot counter as he stared at the sizable total for Snoopy, Mickey Mouse, Mr. Cabelus, Stalin and W.C. Fields. "Do you know that some of these kids will be voting next year?"

be. So far we've only done little things. We could put in a bomb, but we don't want to hurt anybody. We also don't want any big government investigation, no government guys coming in or anything." When asked about the possibility of onerous warfare coming to Langley, they answered, "Well sure, we'd like to but don't want to take a chance on hurting other people."

Bathrooms Locked

The voices said that administrative and teacher reaction so far has been fairly consistent. "They're kind of scared and mad, and they seem pretty aggravated." They said that last Tuesday, however, when all except the lobby bathrooms were locked, a fire was set in the boys restroom and Mr. Cabelus and Mr. Debusk put it out themselves, without evacuating the building. "We're kind of mad about them locking the bathroom doors. They shouldn't have taken it out on the rest of the school when it was just a few of us. We knew they wouldn't keep them locked too long, though, because they know that if we want to get in there's no way to keep us out. It's alot smarter keeping them open than buying new locks all the time."

There were 597 votes cast for Democratic candidates, enough to beat President Nixon. When the votes for "liberal" candidates are added they only totaled 384 -- which doesn't even approach the conservative vote.

A blue jean clad junior agreed: "I sure hope the revolution isn't counting on Langley students to lead the fight 'cause it looks like we're going to sit this one out."

Richard Nixon	588
Edmund Muskie	219
Paul McCloskey	118
Pat Paulsen	98
George McGovern	66
Hubert Humphrey	65
George Wallace	55
Shirley Chisolm	49
Henry Jackson	44
John Lindsey	39
Eugene McCarthy	37
Sam Yorty	2
Edward Kennedy	2
Vance Hartke	6
	1455
Nixon	41%
Muskie	15%
McCloskey	9%
Paulsen	7%
Total Republican Votes (according to Candidates) --	804
Total Democratic Votes (according to Candidates) --	651

Student

by Don Leavens

While many students will be involved in summer occupations and recreation, 15 Langley students will spend almost a month abroad. Those selected from Langley are juniors and sophomores: Laurie Henderson, Jill Karsten, Laurie Mathis, Dottie Harsher, Brian McCreight, John Vorhaus, Duncan Barlow, Mike Bailey, Ann Merritt, Beth Grabowski, Kaethe Gay, Sherry Christie, Ginny Dent, Judy Page, Chris

U.N. Club Receives More A

The United Nations club has brought back more awards, this time from the North American Invitational Model United Nations held four days last weekend at the Shorcham Hotel.

Participants' ability to portray accurately the nation assigned to them earned a first group one of the second best awards. Representing the United Nations of Russia

Nixon's popularity increases in state

Minnesota Poll

22

Copyright 1972 Minneapolis Tribune

Republicans in Minnesota are impressed with President Nixon's efforts to settle the Vietnam War by secret peace talks, while Democrats and independent voters see nothing new in the attempt. These conclusions stem from a statewide survey just completed by the Minneapolis Tribune's Minnesota Poll.

Over-all, among 600 men and women interviewed about two weeks ago, 30 percent said they consider the secret talks a significant development in efforts to end the war, but 58 percent said they feel nothing particularly new was proposed.

On Jan. 25, President Nixon announced that Henry Kissinger and top Communist officials had conferred privately for a two-and-one-half-year period without reaching agreement with North Vietnam.

If the talks were unsuccessful, why were they made public?

Politics and the upcoming fall election were cited most often by state residents (41 percent).

Others said the talks were announced because of public pressure on the administration (9 percent), to improve the President's image or gain sympathy for him (6 percent), and to put administration critics on the defensive (5 percent).

On the other hand, 13 percent said the talks were made public to let Americans know that the administration is trying and to give them hope for peace, and 10 percent said the reason was to keep the public informed.

Six percent said it was done because the secret talks would have gotten out anyway, 5 percent said it was to put pressure on North Vietnam to negotiate, and 3 percent said making the talks public was related to Mr. Nixon's China trip.

Five percent gave a variety of other answers, and 16 percent were indefinite.

Regardless of Minnesotans' opinions on the peace talks or President Nixon's motives, answers to another question in the survey show that the proportion of Minnesotans approving of the President increased from 42 percent in mid-January to 46 percent in the current survey which was conducted the weekend Mr. Nixon began his China trip.

	Mid-January	Current survey
Strong approval of President Nixon	14%	16%
Mild approval	28	30
Neutral or noncommittal	13	16
Mild disapproval	25	21
Strong disapproval	20	17

The first question about the peace talks was:

"Last month, President Nixon revealed that secret peace talks have been held on the Vietnam War. Do you consider the secret peace talks a significant development in trying to end the war, or merely a continuation of what the administration has publicly said it is trying to do?"

The replies for all adults and by political preference:

	All adults	DFLers	Republicans	Independents
A significant development	30%	21%	51%	29%
Continuation of present policy	58	69	36	59
Other answers or no opinion	12	10	13	12

Interviewers then asked (the answers already reported above):

"Why do you think President Nixon made the secret peace talks public?"

What Minnesotans said:

"President Nixon probably thought it was about time to do it. He is quite a politician himself, he took quite a bit of ammunition away from the Democrats when he announced it." (Minneapolis woman, age 75)

"Maybe someone else was going to make them public, so he thought he'd beat them to it." (Redwood County man,

"They were made public to influence North Vietnam into agreeing to terms. He was trying to make himself look like a good guy in front of war protesters and the public. He's looking forward to the election." (Minneapolis man, 22)

The results of the Minneapolis Tribune's Minnesota Poll are based on personal in-the-home interviews with 600 men and women 18 years of age or older. Respondents are selected by probability sampling procedures and interviewed by a staff of 110 trained interviewers. The Minnesota Poll was established in 1944 as a public service.

THE WHITE HOUSE
WASHINGTON

FROM: MORT ALLIN

TO: Gordon Strachan

FYI

Muskie rated strongest of Democratic candidates

Minnesota Poll

Copyright 1972 Minneapolis Tribune

Minnesotans who feel that Sen. Edmund Muskie, D-Maine, would be a stronger Democratic presidential candidate than Sen. Hubert Humphrey in this fall's election outnumber those who feel that Humphrey would be the best contender.

Thirty-eight percent of the 600 men and women interviewed by the Minneapolis Tribune's Minnesota Poll chose Muskie as the strongest, followed by Humphrey with 29 percent.

Sen. Edward Kennedy of Massachusetts was third in the preference of Minnesotans with 17 percent.

Five other announced candidates, Sen. Vance Hartke of Indiana, Sen. Henry Jackson of Washington, New York Mayor John Lindsay, Eugene McCarthy and Sen. George McGovern of South Dakota, shared 12 percent. One percent mentioned other possible candidates, and 3 percent were undecided.

Although Humphrey does better among his own party members, Muskie still leads among DFLers by 37 to 33 percent. Among Republicans and independent voters, about 4 out of 10 chose Muskie compared with one-fourth who said Humphrey would be the strongest candidate.

The 600 men and women interviewed the weekend of Jan. 14 were shown a card listing potential candidates in alphabetical order and asked:

"Here are some of the men that have been mentioned as possible Democratic presidential candidates this fall. Which one do you think would run strongest against President Nixon?"

(The list did not include Gov. George Wallace who ran as the American Independent Party candidate in 1968 but has entered primaries as a Democrat or Rep. Shirley Chisholm, who announced her candidacy after the survey was underway.)

The replies:

	All adults	DFLers	Republicans	Independents
Sen. Edmund Muskie	38%	37%	39%	40%
Sen. Hubert Humphrey	29	33	25	26
Sen. Edward Kennedy	17	19	16	13
New York Mayor John Lindsay	5	4	7	7
Sen. George McGovern	4	2	5	5
Eugene McCarthy	2	2	5	1
Sen. Henry Jackson	1	*	-	2
Sen. Vance Hartke	*	1	-	1
Los Angeles Mayor Sam Yorty	-	-	-	-
Other candidates	1	1	-	1
No opinion	3	1	3	4
	100%	100%	100%	100%

* Less than one percent.

Each person in the survey also was asked why he felt the person he chose would make the strongest candidate. Muskie supporters often cited his current exposure to the people and party backing while those who chose Humphrey often mentioned his past experience and interest in the common man. The family name was influential for those who chose Edward Kennedy.

What Minnesotans said:

"I think he's (Muskie) a brilliant man. The others haven't made that great an impression on me. Lindsay switched, Kennedy had problems, Humphrey talks too much, McCarthy ruined himself last time, and the others are not well known." (Lakeville independent voter, age 25)

"He's (Humphrey) the most popular with most people. Everybody knows him. (Duluth independent, 77)

"Because he'd (Lindsay) have the best appeal to people needed to defeat Nixon—city people and moderate Republicans." (St. Paul DFLer, 23)

"He's (Kennedy) got the Kennedy charisma, not to men-

tion the Kennedy millions. He should have at least the remnants of the Kennedy following." (Minneapolis independent, 27)

"Because of the base of political power he (Humphrey) has built in the past. He has been through this thing before and will run his campaign differently. He is further to the right than Muskie and will pull more votes from Nixon." (Richfield Republican, 58)

The results of the Minneapolis Tribune's Minnesota Poll are based on personal in-the-home interviews with 600 men and women 18 years of age or older. Respondents are selected by probability sampling procedures and interviewed by a staff of 110 trained interviewers. The Minnesota Poll was established in 1944 as a public service.

White dog comes aboard asking man for help...

Terry Kaase was the only person for miles along the Mississippi River when the white dog showed up Sunday afternoon.

Kaase, a 21-year-old senior at the University of Minnesota, was cleaning a bunk room on the towboat Santee.

It's part of his job as Sunday watchman for the Twin City Barge and Towing Co. at Newport downstream from St. Paul.

What's there to guard are a big machinery shed and a half dozen ice-bound towboats including the Santee, the Arch, the tiny Dan Patch and the big retired workboat, the Minneapolis.

It's a lonely job, but when the cleaning is done there is solitude for Kaase, 522 12th Av. SE., to study his microbiology.

What he thought when the white dog showed up on the dock was that he had a master with him and the master might be on one of the boats.

As he jumped ashore to

check, Kaase realized there was a sound in the silent Sunday. A dog whining.

He followed the white dog down the dock and found, not a master prowling aboard one of the boats but another dog, out there in the water. It was all the way in, but hanging on to the edge of the ice with its front paws.

The dog wasn't going to last long. Kaase ran aboard the Viking and lowered a ladder over the side onto the ice. Then he crept out over the piled-up ice chunks, keeping a hand on the ladder until he reached the dog.

He reached down and got his hands under the dog's shoulders, heaved it out and grabbed for the end of the ladder as the water flowed over the edge of the ice.

The dog shook itself and trotted up the bank and away with the white dog, without a word of thanks "But I couldn't have beared to let it drown," he said.

Blast
sewer
in N.D
Associat

Glenbur
Gas ar
were re
Glenbur
day aft
plosion
city lift

Author
functio
propan
the un
pipes f
tion.

Mayor
the
was
blast
damag
trols.
restor
noon.

The
was
said,
velop
and
pecte
yester

Jap
is b
after
Assa

Toky
A b
Fore
ret
from
visit
met
Nor
men

The
Mi
So
the
Aff
Ha
fin
of
V
po
ou
ch
H
du
M
Je
No
bu



THE WHITE HOUSE
WASHINGTON

*Pass
min*

Date: February 23, 1972

TO: H.R. HALDEMAN

FROM: HARRY DENT

H.D.

Please handle _____

For your information XX

Minnesota Poll

□□

Nixon's reelection chances rated good

Copyright 1972 Minneapolis Tribune

As the 1972 presidential election begins to take shape, more Minnesotans expect that President Nixon will be reelected than think he will lose.

They also believe that Vice-President Spiro Agnew should be his running mate, according to a survey by the Minneapolis Tribune's Minnesota Poll.

Although the Democratic Party is in the early stages of selecting a candidate for the November election, 50 percent of those questioned said that they expect Mr. Nixon will win, but 40 percent look for a Democratic victory.

The questions put to a cross-section of 600 voting-age Minnesotans in mid-January:

"Would you like to see Spiro Agnew run again with President Nixon this fall or would you prefer that another vice-presidential candidate be chosen to run with President Nixon?"

The replies for all adults, and by political affiliation:

	All adults	DFLers	Repub- licans	Inde- pend- ents
Agnew chosen again	47%	39%	63%	47%
Another candidate	36	40	31	33
Other answers or no opinion	17	21	6	20
	100%	100%	100%	100%

When Minnesotans were asked last August which they felt would be better for the Republican Party, a Nixon-Agnew ticket or a Nixon-Connally ticket, 25 percent chose Agnew and 61 percent Connally. Fourteen percent were undecided.

"Do you expect that President Nixon will be reelected or defeated in the presidential election this fall?"

	All adults	DFLers	Repub- licans	Inde- pend- ents
Reelected	50%	37%	77%	48%
Defeated	40	57	15	38
Other answers or no opinion	10	6	8	14
	100%	100%	100%	100%

The results of the Minneapolis Tribune's Minnesota Poll are based on personal in-the-home interviews with 600 men and women 18 years of age or older. Respondents are selected by probability sampling procedures and interviewed by a staff of 110 trained interviewers. The Minnesota Poll was established in 1944 as a public service.

THE WHITE HOUSE
WASHINGTON

*File
Main
Folder*

Date: November 22, 1971

TO: H. R. HALDEMAN

FROM: HARRY DENT

DD

Please handle _____

For your information ✓ _____

TRUMBLE, SPANO & ASSOCIATES, INC. PUBLIC RELATIONS

1678 NORTHWESTERN BANK BUILDING
MINNEAPOLIS, MINN. 55402 612 338-6727

JONATHAN VILLAGE ONE CENTER
CHASKA, MINN. 55318 612 448-4900

November 19, 1971

Trumble
Spano
He

Trumble

Mr. Harry Dent
The White House
Washington, D. C.

Dear Harry:

I'm enclosing a set of print-outs of a survey just completed in the Minneapolis-St. Paul metropolitan area showing the President's approval rating. Of particular significance, I feel, is the final tabulation showing 62% approval of the wage-price freeze.

The interview was conducted between Oct. 29 and Nov. 10.

In way of benchmarks, I also am sending summaries of five similar polls taken over the past 24 months.

A final enclosure is additional detail from an August, 1971, survey which breaks out metropolitan-towns-rural. The current poll was taken in the metropolitan area only and I thought you might like to see how that geographical breakdown compares with other parts of the state.

The next poll is scheduled for February. If you are interested in this data, I'll get a copy of those results for you.

The surveys are conducted quarterly by Mid-Continent Surveys of Minneapolis.

I have found their work in the political field to be highly accurate. You might want to use them for more detailed studies in Minnesota, or elsewhere throughout the Midwest.

Sincerely,

Eugene F. Trumble

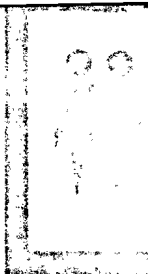
Eugene F. Trumble

EFT:js
Encls.

STATE-WIDE DATA

mid-continent surveys

minneapolis,
minnesota



ALL THINGS CONSIDERED, WOULD YOU SAY THE JOB NIXON HAS BEEN DOING
IS ...

	<u>NOV '69</u>	<u>MAY '70</u>	<u>AUG '70</u>	<u>NOV '70</u>	<u>AUG '71</u>
EXCELLENT	9%	10%	7%	7%	3%
GOOD	38	39	33	35	31
FAIR	36	34	41	38	40
POOR	10	9	11	11	15
VERY POOR	5	6	6	5	7
DON'T KNOW/NO OPINION	2	2	2	4	4

HOW ABOUT THE WAY NIXON HAS HANDLED THE WAR IN VIETNAM ...

STRONGLY APPROVE	7%	8%	7%	8%	4%
APPROVE	61	50	51	51	39
DISAPPROVE	19	26	29	25	35
STRONGLY DISAPPROVE	6	9	5	6	11
NO OPINION	7	7	8	10	11

HOW ABOUT THE WAY NIXON HAS HANDLED THINGS HERE AT HOME ...

STRONGLY APPROVE	6%	5%	4%	5%	2%
APPROVE	61	54	50	50	44
DISAPPROVE	21	29	33	32	35
STRONGLY DISAPPROVE	4	4	7	6	10
NO OPINION	8	8	6	7	9

(1000) (1000) (1000) (1000) (995)

PROBE - A QUARTERLY SURVEY OF MINNESOTA A

AUGUST 1971

CONDUCTED BY MID-CONTINENT SURVEYS INC

WOULD YOU SAY THAT THE JOB PRESIDENT NIXON HAS BEEN DOING IS ...

	POPULATION CLASS				SEX	
	PROBE	7 CO	OTHER	OTHER	MEN	WOMEN
	TOTAL	METRO	TOWNS	RURAL		
130 SAMPLE	* 995 *	* 470 *	* 334 *	* 191 *	* 430 *	* 565 *
EXCELENT	33 3%	17 4%	13 4%	3 2%	13 3%	20 4%
GOOD	307 31%	127 27%	118 35%	62 32%	122 28%	185 33%
FAIR	398 40%	189 40%	125 37%	84 44%	174 40%	224 40%
POOR	153 15%	85 18%	42 13%	26 14%	70 16%	83 15%
VERY POOR	66 7%	37 8%	16 5%	13 7%	40 9%	26 5%
DONT KNOW/NO OPINION	38 4%	15 3%	20 6%	3 2%	11 3%	27 5%
TOTAL	100% 995	100% 470	100% 334	100% 191	100% 430	100% 565

PROBE - A QUARTERLY SURVEY OF MINNESOTA

AUGUST 1971

CONDUCTED BY MID-CONTINENT SURVEYS INC.

HOW ABOUT THE WAY NIXON HAS HANDLED THE WAR IN VIETNAM, DO YOU...

	POPULATION CLASS				SEX	
	PROBE	7 CO	OTHER	OTHER	MEN	WOMEN
	TOTAL	METRO	TOWNS	RURAL		
131 SAMPLE	* 995	* 470	* 334	* 191	* 430	* 565
STRONGLY APPROVE	44 4%	28 6%	13 4%	3 2%	28 7%	16 3%
APPROVE	388 39%	168 36%	139 42%	81 42%	174 40%	214 38%
DISAPPROVE	345 35%	163 35%	113 34%	69 36%	144 33%	201 36%
STRONGLY DISAPPROVE	106 11%	70 15%	22 7%	14 7%	53 12%	53 9%
DONT KNOW/NO OPINION	112 11%	41 9%	47 14%	24 13%	31 7%	81 14%
TOTAL	100% 995	100% 470	100% 334	100% 191	100% 430	100% 565

PROBE - A QUARTERLY SURVEY OF MINNESOTA

AUGUST 1971

CONDUCTED BY MID-CONTINENT SURVEYS I

HOW ABOUT THE WAY NIXON HAS HANDLED THINGS HERE IN THE US, DO YOU .

	POPULATION CLASS				SEX	
	PROBE	7 CO	OTHER	OTHER	MEN	WOME
	TOTAL	METRO	TOWNS	RURAL		
132 SAMPLE	995	470	334	191	430	56
STRONGLY APPROVE	21 2%	13 3%	7 2%	1 1%	7 2%	1 2
APPROVE	437 44%	182 39%	152 46%	103 54%	188 44%	24 44
DISAPPROVE	348 35%	190 40%	99 30%	59 31%	159 37%	18 33
STRONGLY DISAPPROVE	97 10%	58 12%	27 8%	12 6%	47 11%	5 9
DONT KNOW/NO OPINION	92 9%	27 6%	49 15%	16 8%	29 7%	6 11
TOTAL	100% 995	100% 470	100% 334	100% 191	100% 430	100% 56

PROBE - A QUARTERLY SURVEY OF MINNESOTA ADULTS

NOVEMBER 1971

CONDUCTED BY MID-CONTINENT SURVEYS INC

WOULD YOU SAY THAT THE JOB PRESIDENT NIXON HAS BEEN DOING IS...

	PROBE METRO TOTAL	POLITICAL PREFERENCE			MINNEAPOLIS		ST PAUL	
		GOP	DFL	IND	CITY	SUB	CITY	SUB
130 SAMPLE	462	105	226	116	138	156	84	84
EXCELLENT	4%	13%		3%	3%	7%	1%	2%
GOOD	27%	56%	15%	28%	25%	35%	14%	29%
FAIR	43%	27%	52%	42%	43%	42%	50%	39%
POOR	14%	2%	19%	16%	17%	8%	20%	14%
VERY POOR	8%	1%	12%	9%	9%	6%	8%	11%
DONT KNOW/NO OPINION	3%	1%	3%	3%	4%	1%	6%	5%
TOTAL	100%	100%	100%	100%	100%	100%	100%	100%
	462	105	226	116	138	156	84	84

PROBE - A QUARTERLY SURVEY OF MINNESOTA ADULTS

NOVEMBER 1971

CONDUCTED BY MID-CONTINENT SURVEYS INC

WOULD YOU SAY THAT THE JOB PRESIDENT NIXON HAS BEEN DOING IS...

	PROBE METRO TOTAL	SEX		AGE				EDUCATION			1970 INCOME		
		MEN	WOMEN	UNDER 35	35 TO 49	50 TO 64	65 & OVER	NOT HS GRAD	HS GRAD	SOME CLLGE	UNDER 5000	5000 9999	10000 &OVER
130 SAMPLE	462	189	273	192	128	77	63	116	179	167	98	105	216
EXCELLENT	4%	6%	2%	4%	5%	5%		4%	2%	5%	4%	3%	5%
GOOD	27%	25%	28%	23%	29%	30%	32%	18%	28%	32%	19%	23%	33%
FAIR	43%	40%	45%	45%	47%	40%	37%	44%	48%	38%	39%	45%	44%
POOR	14%	14%	14%	19%	9%	17%	10%	16%	11%	16%	21%	17%	11%
VERY POOR	8%	11%	6%	6%	9%	6%	16%	9%	8%	8%	10%	9%	7%
DONT KNOW/NO OPINION	3%	3%	4%	3%	2%	1%	6%	9%	2%	1%	6%	4%	
TOTAL	100%	100%	100%	100%	100%	100%	100%	100%	100%	100%	100%	100%	100%
	462	189	273	192	128	77	63	116	179	167	98	105	216

PROBE - A QUARTERLY SURVEY OF MINNESOTA ADULTS

NOVEMBER 1971

CONDUCTED BY MID-CONTINENT SURVEYS INC

HOW ABOUT THE WAY NIXON HAS HANDLED THE WAR IN VIETNAM, DO YOU...

	PROBE METRO TOTAL	SEX		AGE				EDUCATION			1970 INCOME		
		MEN	WOMEN	UNDER 35	35 TO 49	50 TO 64	65 & OVER	NOT HS GRAD	HS GRAD	SOME CLLGE	UNDER 5000	5000 9999	10000 & OVER
131 SAMPLE	462	189	273	192	128	77	63	116	179	167	98	105	216
STRONGLY APPROVE	4%	7%	2%	3%	6%	5%	3%	3%	3%	7%	3%		7%
APPROVE	37%	47%	30%	32%	44%	39%	37%	28%	44%	37%	21%	36%	45%
DISAPPROVE	38%	26%	46%	45%	34%	34%	32%	42%	36%	37%	42%	40%	35%
STRONGLY DISAPPROVE	13%	15%	11%	14%	11%	13%	14%	10%	10%	18%	16%	16%	11%
DONT KNOW/NO OPINION	8%	4%	10%	6%	5%	9%	14%	17%	7%	2%	17%	8%	1%
TOTAL	100%	100%	100%	100%	100%	100%	100%	100%	100%	100%	100%	100%	100%
	462	189	273	192	128	77	63	116	179	167	98	105	216

PROBE - A QUARTERLY SURVEY OF MINNESOTA ADULTS

NOVEMBER 1971

CONDUCTED BY MID-CONTINENT SURVEYS INC

NIXONS WAGE-PRICE FREEZE AND OTHER STEPS TO CONTROL INFLATION, DO YOU..

	PROBE METRO TOTAL	POLITICAL PREFERENCE			MINNEAPOLIS		ST PAUL	
		GOP	DFL	IND	CITY	SUB	CITY	SUB
134 SAMPLE	462	105	226	116	138	156	84	84
STRONGLY APPROVE	16%	32%	11%	10%	12%	22%	10%	14%
APPROVE	46%	51%	43%	52%	46%	49%	46%	42%
DISAPPROVE	23%	11%	26%	26%	20%	21%	25%	29%
STRONGLY DISAPPROVE	9%	3%	14%	5%	10%	4%	14%	10%
DONT KNOW/NO OPINION	6%	2%	6%	7%	12%	3%	5%	6%
TOTAL	100%	100%	100%	100%	100%	100%	100%	100%
	462	105	226	116	138	156	84	84

PROBE - A QUARTERLY SURVEY OF MINNESOTA ADULTS

NOVEMBER 1971

CONDUCTED BY MID-CONTINENT SURVEYS INC

NIXONS WAGE-PRICE FREEZE AND OTHER STEPS TO CONTROL INFLATION, DO YOU..

	PROBE METRO TOTAL	SEX		AGE				EDUCATION			1970 INCOME		
		MEN	WOMEN	UNDER 35	35 TO 49	50 TO 64	65 & OVER	NOT HS GRAD	HS GRAD	SOME CLLGE	UNDER 5000	5000 9999	10000 80000
154 SAMPLE	462	189	273	192	128	77	63	116	179	167	98	105	216
STRONGLY APPROVE	16%	22%	11%	14%	17%	17%	17%	11%	16%	18%	11%	13%	20%
APPROVE	46%	44%	48%	47%	48%	42%	48%	39%	47%	50%	45%	41%	50%
DISAPPROVE	23%	21%	24%	24%	22%	26%	17%	28%	22%	20%	23%	30%	19%
STRONGLY DISAPPROVE	9%	8%	9%	9%	9%	10%	5%	10%	11%	6%	9%	9%	8%
DONT KNOW/NO OPINION	6%	4%	8%	6%	4%	5%	13%	12%	3%	5%	11%	7%	3%
TOTAL	100%	100%	100%	100%	100%	100%	100%	100%	100%	100%	100%	100%	100%
	462	189	273	192	128	77	63	116	179	167	98	105	216

PROBE - A QUARTERLY SURVEY OF MINNESOTA ADULTS

NOVEMBER 1971

CONDUCTED BY MID-CONTINENT SURVEYS INC

SHOULD NIXON HAVE APPOINTED A WOMAN TO THE U.S. SUPREME COURT, OR NOT

	PROBE METRO TOTAL	POLITICAL PREFERENCE			MINNEAPOLIS		ST PAUL	
		GOP	DFL	IND	CITY	SUR	CITY	SUB
133 SAMPLE	462	105	226	116	138	156	84	84
YES - SHOULD	35%	29%	40%	32%	43%	30%	39%	27%
NO - SHOULD NOT	41%	49%	38%	41%	32%	49%	33%	48%
DONT KNOW/NO OPINION	24%	23%	22%	28%	25%	21%	27%	25%
TOTAL	100%	100%	100%	100%	100%	100%	100%	100%
	462	105	226	116	138	156	84	84

PROBE - A QUARTERLY SURVEY OF MINNESOTA ADULTS

NOVEMBER 1971

CONDUCTED BY MID-CONTINENT SURVEYS INC

SHOULD NIXON HAVE APPOINTED A WOMAN TO THE U.S. SUPREME COURT, OR NOT

	PROBE METRO TOTAL	SEX		AGE				EDUCATION			1970 INCOME		
		MEN	WOMEN	UNDER 35	35 TO 49	50 TO 64	65 & OVER	NOT HS GRAD	HS GRAD	SOME CLLGE	UNDER 5000	5000 9999	10000 & OVER
133 SAMPLE	462	189	273	192	128	77	63	116	179	167	98	105	216
YES - SHOULD	35%	31%	38%	38%	30%	39%	33%	34%	34%	38%	39%	39%	33%
NO - SHOULD NOT	41%	39%	42%	35%	44%	45%	48%	46%	39%	40%	38%	33%	44%
DONT KNOW/NO OPINION	24%	30%	20%	28%	26%	16%	19%	21%	28%	22%	23%	28%	23%
TOTAL	100% 462	100% 189	100% 273	100% 192	100% 128	100% 77	100% 63	100% 116	100% 179	100% 167	100% 98	100% 105	100% 216

PROBE - A QUARTERLY SURVEY OF MINNESOTA ADULTS

NOVEMBER 1971

CONDUCTED BY MID-CONTINENT SURVEYS INC.

HOW ABOUT THE WAY NIXON HAS HANDLED THINGS HERE IN THE U.S., DO YOU...

	PROBE METRO TOTAL	POLITICAL PREFERENCE			MINNEAPOLIS		ST PAUL	
		GOP	DFL	IND	CITY	SUB	CITY	SUB
132 SAMPLE	462	105	226	116	138	156	84	84
STRONGLY APPROVE	3%	8%		3%	4%	4%	1%	
APPROVE	47%	72%	38%	46%	40%	56%	43%	46%
DISAPPROVE	34%	14%	46%	30%	39%	29%	32%	38%
STRONGLY DISAPPROVE	10%	2%	12%	14%	12%	6%	13%	8%
DONT KNOW/NO OPINION	6%	4%	5%	7%	5%	4%	11%	7%
TOTAL	100%	100%	100%	100%	100%	100%	100%	100%
	462	105	226	116	138	156	84	84

PROBE - A QUARTERLY SURVEY OF MINNESOTA ADULTS

NOVEMBER 1971

CONDUCTED BY MID-CONTINENT SURVEYS INC

HOW ABOUT THE WAY NIXON HAS HANDLED THINGS HERE IN THE U.S., DO YOU...

	PROBE METRO TOTAL	SEX		AGE				EDUCATION			1970 INCOME		
		MEN	WOMEN	UNDER 35	35 TO 49	50 TO 64	65 & OVER	NOT HS GRAD	HS GRAD	SOME CLLGE	UNDER 5000	5000 9999	1000 2000
132 SAMPLE	462	189	273	192	128	77	63	116	179	167	98	105	21
STRONGLY APPROVE	3%	5%	1%	3%	2%	3%	5%	3%	2%	4%	6%	3%	
APPROVE	47%	45%	48%	45%	49%	53%	41%	37%	51%	49%	37%	41%	54
DISAPPROVE	34%	33%	35%	36%	34%	38%	27%	39%	35%	31%	33%	41%	34
STRONGLY DISAPPROVE	10%	12%	8%	11%	8%	5%	13%	7%	8%	13%	13%	9%	6
DONT KNOW/NO OPINION	6%	5%	7%	5%	6%	1%	14%	14%	4%	4%	11%	7%	
TOTAL	100%	100%	100%	100%	100%	100%	100%	100%	100%	100%	100%	100%	100
	462	189	273	192	128	77	63	116	179	167	98	105	21

PROBE - A QUARTERLY SURVEY OF MINNESOTA ADULTS

NOVEMBER 1971

CONDUCTED BY MID-CONTINENT SURVEYS INC

HOW ABOUT THE WAY NIXON HAS HANDLED THE WAR IN VIETNAM, DO YOU...

	PROBE METRO TOTAL	POLITICAL PREFERENCE			MINNEAPOLIS		ST PAUL	
		GOP	DFL	IND	CITY	SUB	CITY	SUB
131 SAMPLE	462	105	226	116	138	156	84	84
STRONGLY APPROVE	4%	12%	1%	3%	2%	8%	1%	5%
APPROVE	37%	57%	27%	41%	30%	44%	27%	45%
DISAPPROVE	38%	24%	47%	34%	39%	35%	42%	37%
STRONGLY DISAPPROVE	13%	1%	18%	13%	16%	10%	18%	10%
DONT KNOW/NO OPINION	8%	6%	6%	9%	13%	3%	12%	4%
TOTAL	100% 462	100% 105	100% 226	100% 116	100% 138	100% 156	100% 84	100% 84


THE WHITE HOUSE
WASHINGTON

Date: November 2, 1971

TO: BOB HALDEMAN

FROM: HARRY DENT 

Please handle _____

For your information _____ 

File
Min
Polls

Tribune
10-27-71

Minnesota Poll

Nearly half approve of Mondale, Humphrey

Copyright © 1971 Minneapolis Tribune

Sen. Walter Mondale and Sen. Hubert H. Humphrey both won approval of nearly half the voting-age residents questioned in a statewide survey by the Minneapolis Tribune's Minnesota Poll.

Approval of Mondale stands at 49 percent, while 23 percent disapprove. The remainder (28 percent) are in the neutral group or had no opinion.

Humphrey, with 47 percent approval and 38 percent disapproval, has improved his standing with the electorate since July.

The following table compares the popularity of Minnesota's two Democratic senators in July and late September:

SEN. WALTER MONDALE

	July	Sept.
Strong approval of Mondale	15%	16%
Mild approval	34	33
Neutral or noncommittal	29	28
Mild disapproval	16	17
Strong disapproval	6	6
	100%	100%

SEN. HUBERT HUMPHREY

	July	Sept.
Strong approval of Humphrey	14%	17%
Mild approval	30	30
Neutral or noncommittal	17	15
Mild disapproval	22	19
Strong disapproval	17	19
	100%	100%

The popularity of Humphrey and Mondale was measured by showing each of the men and women in the survey an 11-point rating scale. The higher the number, the more a person approves; the lower the number, the less he approves.

A different cross-section of Minnesotans was interviewed in the July and September polls.

The results of the Minneapolis Tribune's Minnesota Poll are based on personal in-the-home interviews with 600 men and women 18 years of age or older. Respondents are selected by probability sampling procedures and interviews by a staff of 110 trained interviewers. The Minnesota Poll was established in 1944 as a public service.

Majority believes Nixon lacks skill in vital areas

Minnesota Poll

Copyright 1971 Minneapolis Tribune

A majority of Minnesotans finds the Nixon administration lacking skill in handling the economy, establishing world peace, ending the war in Vietnam, helping minority groups and establishing harmony in the land.

That is indicated in a statewide survey by the Minneapolis Tribune's Minnesota Poll taken about six weeks after the beginning of the wage-price freeze. Twenty-eight percent said the administration was doing an excellent or good job on the economy but 69 percent rated the administration's efforts as fair or poor.

Of the five areas, the most favorable reaction is in encouraging peace throughout the world. Thirty-seven percent of the men and women rated the administration as excellent or good, while 61 percent said fair or poor.

State residents are more critical of efforts to end the war in Vietnam; 29 percent said excellent or good compared with 69 percent who gave fair or poor ratings.

The questions put to a cross-section of 600 men and women in late September were:

"How would you rate the job the Nixon administration is doing in each of the following areas:

"First, controlling inflation and stabilizing the economy. Excellent, good, fair, or poor?"

"Next, encouraging peace among nations of the world. Excellent, good, fair, or poor?"

"Providing better education, employment and housing opportunities for minority groups."

"Ending the war in Vietnam."

"Helping Americans understand each other and live in harmony."

The replies:

	Excel- lent	Good	Fair	Poor	No opin.
Inflation and the economy	5%	23%	43%	26%	3%
World peace	7	30	41	20	2
Helping minority groups..	4	27	39	24	6
Vietnam	5	24	31	38	2
Harmony among Americans	3	18	46	27	6

Democratic-Farmer-Laborites In the survey are more critical than are Republicans of the administration policies in each of the areas. But even among the President's own party members, about half feel the administration is doing only a fair or poor job on the economy, world peace, helping minorities, and Vietnam. Six out of 10 Republicans were critical of the job being done in helping Americans understand each other and live in harmony.

Answers to another question asked earlier in the survey show that the over-all rating of President Nixon is up slightly from August. In the current survey, 44 percent of the men and women have a favorable impression and 42 percent an unfavorable impression of Mr. Nixon. The remainder (14 percent) were neutral or had no opinion.

The results of the Minneapolis Tribune's Minnesota Poll are based on personal in-the-home interviews with 600 men and women 18 years of age or older. Respondents are selected by probability sampling procedures and interviewed by a staff of 110 trained interviewers. The Minnesota Poll was established in 1944 as a public service.

~~THE WHITE HOUSE~~
WASHINGTON

Date 9-9-71

NOTE TO: H. R. HALDEMAN

FROM: GORDON STRACHAN

Although you usually don't want
to receive informal state polls,
this Minnesota Poll is interesting
in light of the ORC results received
today.

Sun., Aug. 29, 1971

File
Min
Polls

Many favor Connally as Nixon running mate

Minnesota Poll

Copyright 1971 Minneapolis Tribune

Most Minnesotans, including Republicans, believe that Treasury Secretary John B. Connally would be a better running mate for President Nixon in 1972 than Vice-President Spiro Agnew would be.

In a statewide survey of public opinion taken in mid-August mainly before Connally received national exposure in testifying about the administration's price-wage freeze, The Minneapolis Tribune's Minnesota Poll asked:

"There's been some speculation about who would be the vice-presidential candidate if Mr. Nixon runs again, Vice-President Agnew or John Connally, who is Secretary of the Treasury. Which do you think would be better for the Republican party, a Nixon-Agnew ticket or a Nixon-Connally ticket?"

The replies:

	All adults	Repub- licans
Nixon-Agnew better	25%	36%
Nixon-Connally better	61	52
Other answers or no opinion	14	12
	100%	100%

Two out of three Democratic-Farmer-Laborites (67 per-

cent) and nearly as many independent voters (63 percent) said they think Connally would add more strength to the 1972 Republican ticket.

When the 600 Minnesotans interviewed were asked whether they thought President Nixon will run for re-election, 85 percent said they think he will, while 13 percent predicted he will not. Two percent were undecided.

Agnew is found to be slightly more unpopular with Minnesotans now than in April. In the current survey, 27 percent have a favorable impression of the Vice-President, compared with 57 percent who disapprove of him. The division in April was 32-percent approval and 49-percent disapproval.

No measure was taken of Connally's popularity in Minnesota.

The results of the Minneapolis Tribune's Minnesota Poll are based on personal in-the-home interviews with 600 men and women 18 years of age or older. Respondents are selected by probability sampling procedures and interviewed by a staff of 110 trained interviewers. The Minnesota Poll was established in 1944 as a public service.

File
Minn.
Polls

4B
Minneapolis Tribune

Sun., Aug. 29, 1971

Many favor Connally as Nixon running mate

Minnesota
Poll

Copyright 1971 Minneapolis Tribune

Most Minnesotans, including Republicans, believe that Treasury Secretary John B. Connally would be a better running mate for President Nixon in 1972 than Vice-President Spiro Agnew would be.

In a statewide survey of public opinion taken in mid-August mainly before Connally received national exposure in testifying about the administration's price-wage freeze, The Minneapolis Tribune's Minnesota Poll asked:

"There's been some speculation about who would be the vice-presidential candidate if Mr. Nixon runs again, Vice-President Agnew or John Connally, who is Secretary of the Treasury. Which do you think would be better for the Republican party, a Nixon-Agnew ticket or a Nixon-Connally ticket?"

The replies:

	All adults	Repub- licans
Nixon-Agnew better	25%	36%
Nixon-Connally better	61	52
Other answers or no opinion	14	12
	100%	100%

Two out of three Democratic-Farmer-Laborites (67 per-

cent) and nearly as many independent voters (63 percent) said they think Connally would add more strength to the 1972 Republican ticket.

When the 600 Minnesotans interviewed were asked whether they thought President Nixon will run for reelection, 85 percent said they think he will, while 13 percent predicted he will not. Two percent were undecided.

Agnew is found to be slightly more unpopular with Minnesotans now than in April. In the current survey, 27 percent have a favorable impression of the Vice-President, compared with 57 percent who disapprove of him. The division in April was 32-percent approval and 49-percent disapproval.

No measure was taken of Connally's popularity in Minnesota.

The results of the Minneapolis Tribune's Minnesota Poll are based on personal in-the-home interviews with 600 men and women 18 years of age or older. Respondents are selected by probability sampling procedures and interviewed by a staff of 110 trained interviewers. The Minnesota Poll was established in 1944 as a public service.

File
Poll
min

Date 7-1-71

TO: H. R. HALDEMAN

FROM: CLARK MacGREGOR *CM*

Please Handle X FYI

Hold File

Comments _____

Minnesota Poll

6/28/71

Humphrey's popularity slips 10 points in state

Copyright 1971 Minneapolis Tribune

Sen. Hubert Humphrey's popularity among Minnesotans has dropped markedly since the beginning of the year when he returned to the Senate.

Forty-four percent of the 600 men and women questioned by the Minneapolis Tribune's Minnesota Poll in early June said they approve of Humphrey and 39 percent disapprove.

In January, 54 percent had a favorable impression. The 10 percentage-point decline is divided equally between a shift to neutral or noncommittal and mild disapproval.

Seventy-one percent of DFLers in the current survey approve of Humphrey, as do 16 percent of Republicans and 41 percent of independent voters. In January, 80 percent of his own party members had a favorable impression of Humphrey.

Sen. Humphrey's popularity as recorded by the Minnesota Poll in late October when he was the DFL candidate for the Senate, in January, and in early June before release of Pentagon documents linking the Johnson administration to escalation of the Vietnam war:

	Oct. 1970	Jan. 1971	June 1971
Strong approval of Humphrey...	20%	22%	17%
Mild approval	30	32	27
Neutral or noncommittal	14	12	17
Mild disapproval	20	18	23
Strong disapproval	16	16	16
	100%	100%	100%

A different cross-section of Minnesota adults were polled in each of the surveys. Respondents rated Humphrey using an 11-point rating scale designed to measure direction and intensity of attitude.

One out of four in the current survey also were asked why he approves or disapproves of Humphrey.

What Minnesotans Said:

I approve because:

"I think he has a good record of being interested in all the people, the poor as well as the rich. He's a sincere man. His record is good." (Mazeppa man, age 74)

"I think he has contributed very generously of his time, energy, and talents to the state of Minnesota. I admire him as a man and I think he has done the best he can, although I don't agree with many of his ideas." (Minnetonka woman, 47)

"He's sincerely interested in his country and he's proved this over the years." (Willmar woman, 41)

I disapprove because:

"I just don't like him. He talks too much and doesn't say anything." (Jordan woman, 55)

"I think he's a talker. Oh, I think he believes in the state of Minnesota, but most of his talk is just political to further himself." (Wheaton man, 27)

"He didn't do much with the war in Vietnam when he was in. Now he is after Nixon to bring the troops home. Why didn't he do that when he was in with Johnson?" (Meeker County man, 62).

The results of the Minneapolis Tribune's Minnesota Poll are based on personal in-the-home interviews with 600 men and women 18 years of age or older. Respondents are selected by probability sampling procedures and interviewed by a staff of 110 trained interviewers. The Minnesota Poll was established in 1944 as a public service.

6/28/71


THE WHITE HOUSE
WASHINGTON



Date May 26, 1971

NOTE TO: H. R. HALDEMAN

FROM: GORDON STRACHAN

Polls from Minnesota and
California are attached with
interesting sections marked.

File
 11-182-
 111

"President Nixon has said that if we leave South Vietnam in a position to defend herself we will have peace in the next generation. Do you agree or disagree?"

Agree	17%
Disagree	72
No opinion	11

"President Nixon has said that all U.S. troops will be withdrawn from Vietnam as soon as the South Vietnamese have a good chance to defend themselves and U.S. prisoners are returned. When do you think this time is likely to come?"

Two years or longer, never	44%
Before end of 1972	19
Other responses, no opinion	37

"When do you think all U.S. troops WILL be out of Vietnam?"

By end of current year	9%
By end of 1972	15
Two years or more, never	51
Other responses, no opinion	25

MINNESOTA POLL - Vietnam

In late April, 1971, 600 Minnesotans 18 years of age or older were asked:

"When it comes to ending the war in Vietnam, do you think the administration is making a great deal of progress, a little progress, or no progress at all?"

The trend since the beginning of the year:

	<u>Jan.</u>	<u>Feb.</u>	<u>Mid March</u>	<u>Late April</u>
A great deal	19%	12%	13%	17%
A little	61	55	57	61
No progress	17	30	28	20
No opinion	3	3	2	2

"President Nixon has said that he has kept every promise he has made on removing U.S. troops from Vietnam, and that the invasions into Cambodia and Laos have served to weaken the enemy and hasten the end to United States involvement in the war. Do you agree with Mr. Nixon's summary or disagree?"

	<u>All adults</u>	<u>Men</u>	<u>Women</u>
Agree with summary	42%	50%	35%
Disagree	49	45	53
Other answers or no opinion	9	5	12

"The 49 percent who feel the assessment is not valid also were asked where they disagree. Of this group, 30 percent question the statement on troop withdrawal, another 30 percent feel the Cambodian and Laotian invasions did not weaken the enemy, and 21 percent doubt that the invasions will hasten the end of U.S. involvement.

"Seventeen percent believe the Cambodian and Laotian operations achieved the opposite of what the President claimed -- that they deepened U.S. involvement in the war.

"Nineteen percent disagree with the assessment completely or feel there is a credibility gap.

"Six percent mentioned general disapproval of the war, 9 percent gave other answers and 2 percent were indefinite."

The next question asked of all respondents in the survey:

"Between May 1 and Dec. 1, American troop withdrawal will be 100,000 men, or about 1,800 a month more than now. Are you satisfied or not with this rate of withdrawal?"

	<u>All Adults</u>	<u>Men</u>	<u>Women</u>
Satisfied by withdrawal rate	58%	62%	55%
Not satisfied	35	33	36
Other answers or no opinion	7	5	9

"Some people were disappointed because the President made no promises about cutting back air attacks or about withdrawing all American troops. Do you agree or disagree that his announcement was disappointing for those reasons?"

	<u>All Adults</u>	<u>Men</u>	<u>Women</u>
Agree, announcement was disappointing	53%	47%	58%
Disagree	40	49	33
Other answers or no opinion	7	4	9

CALIFORNIA POLL - Vietnam

A representative cross-section of 1,050 Californians were asked between April 26 - May 3, 1971 questions pertaining to the Vietnam war. The questions asked were:

Credibility Gap

"There has been so many shifts in our government's statements about the Vietnam war in the past that I find it hard to believe the President is giving us the whole story now."

	<u>May 1971</u>	<u>May 1970</u>
Agree strongly	39%	34%
Agree somewhat	30	30
No opinion	12	8
Disagree somewhat	10	16
Disagree strongly	9	12

"We should pull out of Vietnam and Southeast Asia as soon as possible even if this step is seen by the rest of the world as a political and military defeat for the United States?"

	<u>May 1971</u>	<u>May 1970</u>
Agree strongly	41%	33%
Agree somewhat	18	13
No opinion	9	9
Disagree somewhat	15	16
Disagree strongly	17	29

"Losing the war in Vietnam is something that this country should avoid at all costs."

	<u>May 1971</u>	<u>May 1970</u>
Agree strongly	16%	23%
Agree somewhat	10	14
No opinion	14	9
Disagree somewhat	24	22
Disagree strongly	36	32

"Some people have said that if the United States withdraws from Vietnam the Communists will eventually gain control of the South Vietnamese people and government. How concerned would you be about this happening in respect to the security of the United States? Would you be greatly concerned, somewhat concerned, or not too concerned?"

	<u>Statewide</u>	
	<u>May 1971</u>	<u>May 1970</u>
Greatly concerned	38%	46%
Somewhat concerned	33	28
Not too concerned	25	24
No opinion	4	2

"President Nixon's schedule of withdrawals from Vietnam should be speeded up so that all ground troops are out by the end of this year."

	<u>Agree</u>		<u>Disagree</u>		
	<u>Strongly</u>	<u>Somewhat</u>	<u>Somewhat</u>	<u>Strongly</u>	<u>No Opinion</u>
	50%	20%	12%	8%	10%
<u>Statewide</u>					
<u>By age</u>					
18-20	62%	16	10	6	6
21-29	52	24	10	8	6
30-49	48	19	13	9	11
50-69	49	18	11	11	11
70 & over	50	16	11	14	9
<u>By Income</u>					
Under \$4,999	57	17	8	9	9
\$5,000-\$9,999	50	21	11	9	9
\$10,000-14,999	48	22	13	8	9
\$15,000-19,999	42	22	16	13	7
\$20,000 & over	47	17	11	10	15

CALIFORNIA POLL - Trial Heat

Between April 26 - May 1, 1971, a representative cross-section of 1,050 Californians were asked:

"I know that the 1972 presidential election is more than a year away, but let's assume it was being held this month. If you were voting today, who would you vote for?"

NIXON - MUSKIE - WALLACE

	<u>May 1971</u>	<u>November 1970</u>
Nixon	44%	47%
Muskie	45	41
Wallace	4	4
Undecided	7	8

NIXON - KENNEDY - WALLACE

Nixon	43	47
Kennedy	46	41
Wallace	3	4
Undecided	8	8

NIXON - HUMPHREY - WALLACE

Nixon	45	52
Humphrey	41	36
Wallace	5	5
Undecided	9	7

"Should Nixon not be the candidate for any reason, present prospects for a Republican victory next year become even dimmer. Two other Republicans considered to be leading contenders in the event Nixon is not the nominee, California Governor Ronald Reagan and Vice President Spiro Agnew, fare quite poorly in current tests of strength against Muskie, Kennedy, and Humphrey."

Reagan	33%
Muskie	53
Wallace	6
Undecided	8

Reagan	34%
Kennedy	54
Wallace	5
Undecided	7

Reagan	38%
Humphrey	46
Wallace	6
Undecided	10

Agnew	23%
Muskie	58
Wallace	6
Undecided	13

Agnew	28%
Kennedy	56
Wallace	5
Undecided	11

Agnew	28%
Humphrey	49
Wallace	7
Undecided	16

The same sample was asked:

"Let's assume that in addition to the two major parties - Democrat and Republican - there was also a George Wallace ticket and a fourth ticket called 'Common Cause' headed by John Gardner. If you were voting today, who would you vote for?"

FOUR PARTY RACE

All voters - Statewide

Nixon	42%
Muskie	36
Wallace	7
Gardner	9
Undecided	6
Nixon	44%
Kennedy	34
Wallace	4
Gardner	9
Undecided	9
Nixon	43%
Humphrey	32
Wallace	5
Gardner	9
Undecided	11

THE WHITE HOUSE
WASHINGTON

Date: May 14, 1971

TO: BOB HALDEMAN

FROM: HARRY DENT

Please handle _____

For your information _____

MINNESOTA REPUBLICAN
STATE CENTRAL COMMITTEE

May 12, 1971

TO: BOB COLE
TOM EVAN
HARRY BLANT

FROM: GEORGE THOMAS

Minnesota

during the period, April 23 - May 5, I asked the top leadership of the party - state officers, district chairmen and chairmen - for their views on several questions. We've tabulated the objective results and summarized the subjective data and have enclosed them for your information.

this can't be interpreted as a reliable and scientific survey. It is not. It is, though, a reflection of how the top leadership believes Minnesotans see certain areas.

I hope it is helpful. If you wish more of the specifics and details, let me know. It is meant to be feedback that will be of assistance to you in your thinking and planning as we move toward the '72 election and the reelection of President Nixon.

enc.

GL:dg

the job being done by President Nixon in the following areas: (as you the people in Minnesota see it)

	EXCELLENT	GOOD	AVERAGE	FAIR	POOR
Vietnam War	-	32%	14%	27%	27%
Arab-Israel conflict	10%	71%	14%	-	5%
Economy	-	14%	18%	41%	27%
d. Farm program	-	-	-	55%	45%
e. Communicating with public in forthright manner	-	24%	28%	28%	19%

2. If you could suggest one thing in each area for the President to do, what would suggest:

- Vietnam War: Save POWs, get out and end war
- Arab-Israel conflict: Stay neutral
- Economy: Wide range of suggestions to improve employment and business conditions
- Farm program: Get new Secretary of Agriculture and have department express genuine interest in farmers and communicate with them
- Communicating with public: Wide range of suggestions from frequency and style of press conferences and locations of them.

3. Rate MONDAY:

- Reading frequency: every week 52%, on occasion 33%, almost never 15%
- Rating: excellent 10%, good 50%, average 16%, fair -, poor 10%
- What would you change to improve it: Change to a shorter, more informative, less expensive production. Consider wider distribution and publish less often.

4. What suggestions do you have for the President to communicate with the public? Use Mrs. Nixon, specific issues and more relaxed appearance.

5. If the election were held today in Minnesota between Nixon and Muskie, who would win?
Nixon 28% Muskie 72%

6. Other suggestions or comments to be passed along to appropriate persons in Washington?

RNC - allow state chairmen and chairwomen to comprise the National Committee
Instead of working from the top down

Push revenue sharing

Work on young vote

Focus attention on issues in addition to war